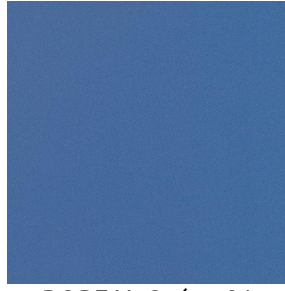


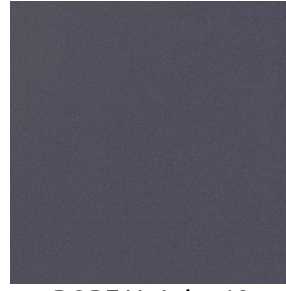
BOREAL



BOREAL Turquoise 53



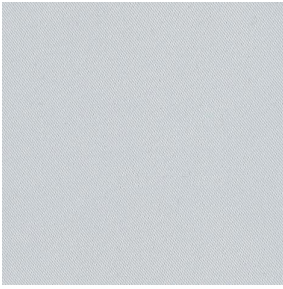
BOREAL Océan 91



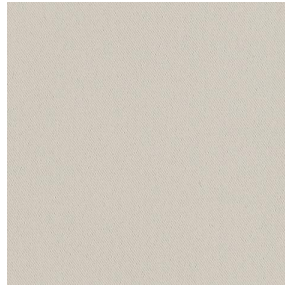
BOREAL Acier 18



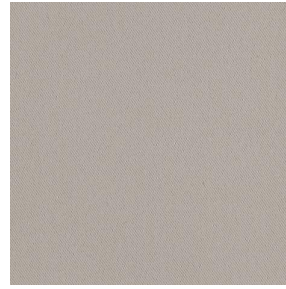
BOREAL Gris 97



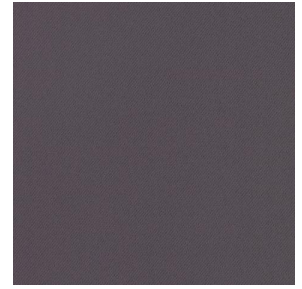
BOREAL Blanc 01



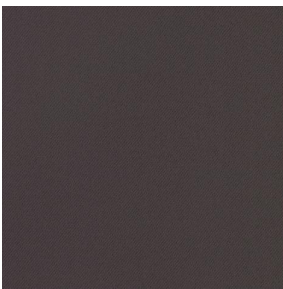
BOREAL Crème 02



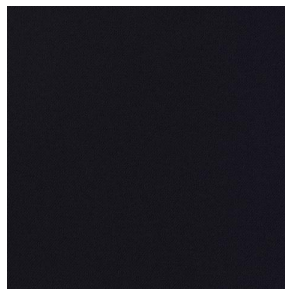
BOREAL Mastic 48



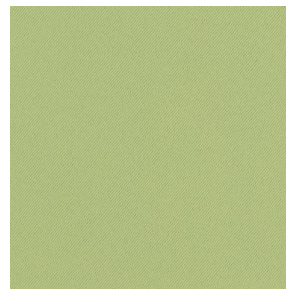
BOREAL Taupe 95



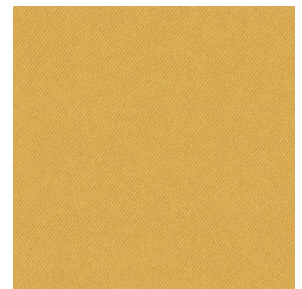
BOREAL Chocolat 70



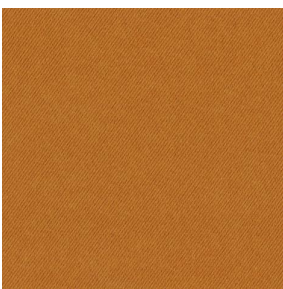
BOREAL Noir 10



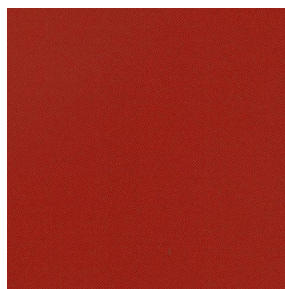
BOREAL Mousse 92



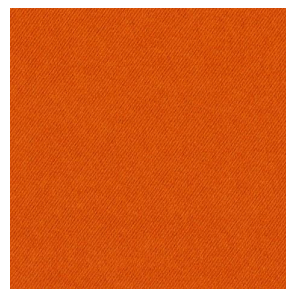
BOREAL Moutarde 47



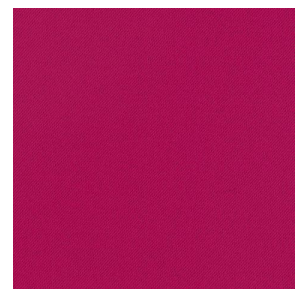
BOREAL Cuivre 50



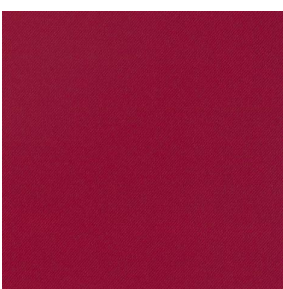
BOREAL Terracotta 65



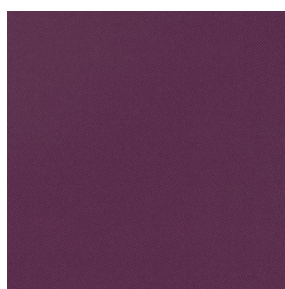
BOREAL Orange 15



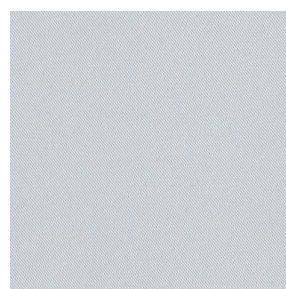
BOREAL Fuchsia 33



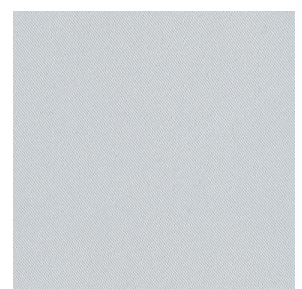
BOREAL Bordeaux 04



BOREAL Prune 84



BOREAL BPI 00



BOREAL BPI 00



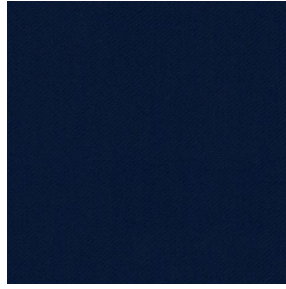
(Headquarters) SOTEXPRO - 510 route de Montchal - 42360 PANISSIÈRES - FRANCE - +33 4 77 27 60 60
(Showroom) Le LAB' SOTEXPRO - 4 rue du Mail - 75002 PARIS - FRANCE

Non-contractual photos and colors - Indicative fitting - Fitting may vary depending on support selected

BOREAL



BOREAL cactus 36



BOREAL nuit 128



BOREAL Titanium 98



BOREAL Faience 149

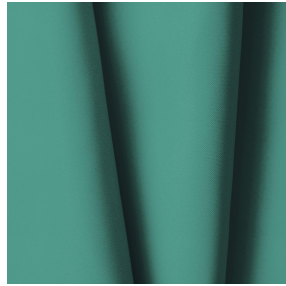
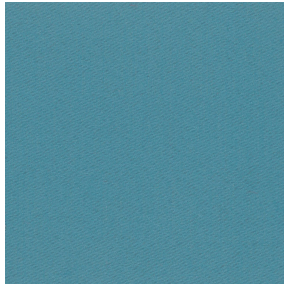


BOREAL Indigo 144



(Headquarters) SOTEXPRO - 510 route de Montchal - 42360 PANISSIÈRES - FRANCE - +33 4 77 27 60 60
(Showroom) Le LAB' SOTEXPRO - 4 rue du Mail - 75002 PARIS - FRANCE

Non-contractual photos and colors - Indicative fitting - Fitting may vary depending on support selected



BOREAL emeraude 88

Ce tissu uni se décline autour d'une gamme de plusieurs coloris, il répond à tous les styles et ambiances.

Propriétés techniques



Non feu



Thermique





Acoustique

Applications Store bateau - Cache sommier - Doublure - Chemins de lit - Rideaux

Composition 100% polyester FR

Poids 260 g/m² Laize 290 cm

Sens Contre sens ou sens normal Raccord ↔ cm ↓ cm

Conseils d'entretien     

Certifications OEKO-TEX STANDARD 100 (CQ 1006/1)

Minimum commande 1 mètre(s) linéaire(s)

Caractéristiques techniques

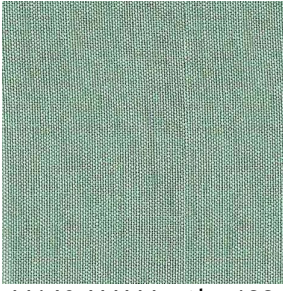
Non feu	M1 / B1 / IMO PASS / UNI 8456 / 9174 Classe Uno
Acoustique	Coeff. moyen de réduction sonore (NRC) : 0.88 Coeff. d'absorption acoustique pondéré (a _w) : 0.90 Classe d'absorption acoustique (a _w) : A
Indices optiques	Réflexion lumière : 55 % Absorption lumière : 45 % Transmission lumière : 0 %
Indices thermiques	réflexion solaire : 53 % absorption solaire : 47 % Transmission solaire : 0 % Transmission UV : 0 % Gtot : Gt 40 % Fc 67 %
Résistance	Solidité lumière (unités Class/8) 6 Stabilité dimensionnelle (%) Chaîne 0 Trame 0 Allongement rupture (mm) Chaîne 17 Trame 27 Résistance rupture (daN) Chaîne 87 Trame 110



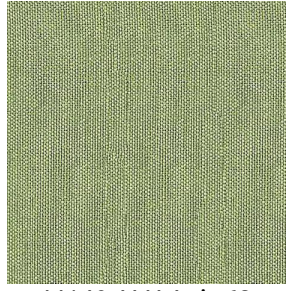
(Headquarters) SOTEXPRO - 510 route de Montchal - 42360 PANISSIÈRES - FRANCE - +33 4 77 27 60 60
(Showroom) Le LAB' SOTEXPRO - 4 rue du Mail - 75002 PARIS - FRANCE

Non-contractual photos and colors - Indicative fitting - Fitting may vary depending on support selected

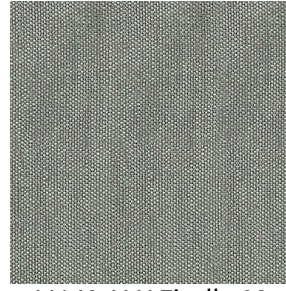
M140 ALU



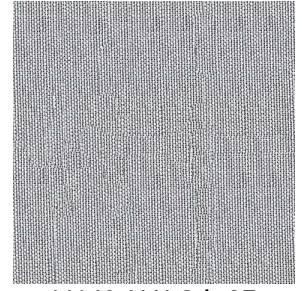
M140 ALU Menthe 122



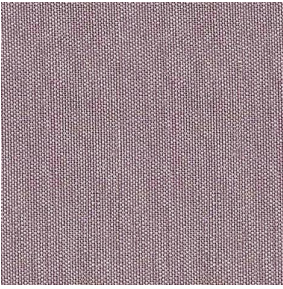
M140 ALU Anis 62



M140 ALU Ficelle 09



M140 ALU Gris 97

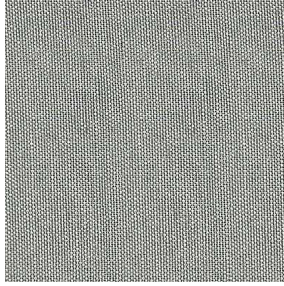


M140 ALU Vieux rose
64



(Headquarters) SOTEXPRO - 510 route de Montchal - 42360 PANISSIÈRES - FRANCE - +33 4 77 27 60 60
(Showroom) Le LAB' SOTEXPRO - 4 rue du Mail - 75002 PARIS - FRANCE

Non-contractual photos and colors - Indicative fitting - Fitting may vary depending on support selected



M140 ALU Lin 11

Propriétés techniques



Non feu Thermique Transparent

Applications Store bateau - Parois japonaises - Rideaux

Composition 100 % polyester FR aluminisé

Poids 70 g/m² Laize 280 cm

Sens Contre sens ou sens normal Raccord ↔ cm ↓ cm

Conseils d'entretien

Minimum commande 1 mètre(s) linéaire(s)

Caractéristiques techniques

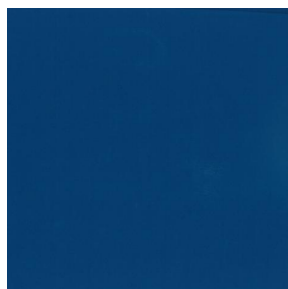
Non feu	M1 / IMO PASS	
Indices optiques	Réflexion lumière :	32 %
	Absorption lumière :	40 %
	Transmission lumière :	28 %
Voile transparent	Oui	
Indices thermiques	réflexion solaire :	34 %
	absorption solaire :	36 %
	Transmission solaire :	30 %
	Transmission UV :	28 %
	Gtot :	Gt 46 % Fc 78 %
Résistance	Solidité lumière (unités Class/8)	4
	Stabilité dimensionnelle (%)	
	Chaîne	-0,5
	Trame	0
	Allongement rupture (mm)	
	Chaîne	14
	Trame	33
	Résistance rupture (daN)	
	Chaîne	45
	Trame	41



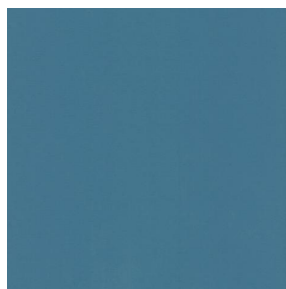
(Headquarters) SOTEXPRO - 510 route de Montchal - 42360 PANISSIÈRES - FRANCE - +33 4 77 27 60 60
(Showroom) Le LAB' SOTEXPRO - 4 rue du Mail - 75002 PARIS - FRANCE

Non-contractual photos and colors - Indicative fitting - Fitting may vary depending on support selected

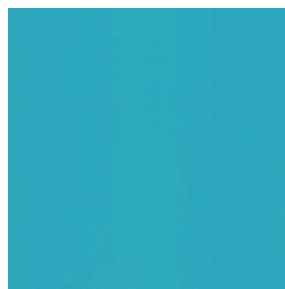
NOCTURNE



NOCTURNE Océan 91



NOCTURNE Arctique 58



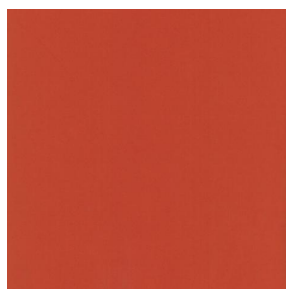
NOCTURNE Cyan 90



NOCTURNE Mousse 92



NOCTURNE Abricot 08



NOCTURNE Orange 15



NOCTURNE Fuchsia 33



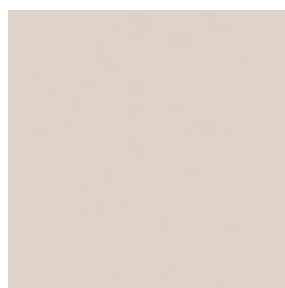
NOCTURNE Sienne 29



NOCTURNE Perle 96



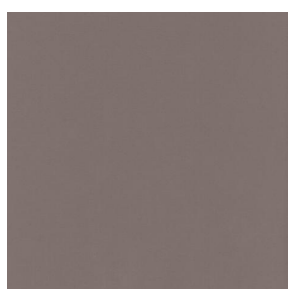
NOCTURNE Grisé 03



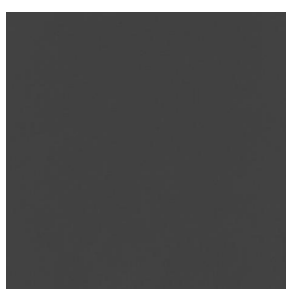
NOCTURNE Crème 02



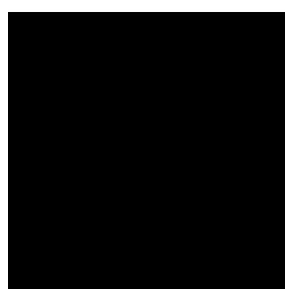
NOCTURNE Mastic 48



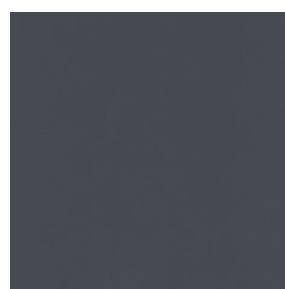
NOCTURNE Brun 23



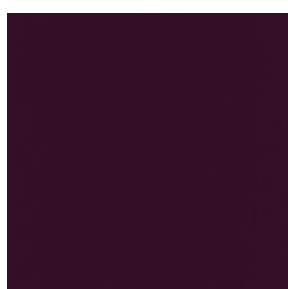
NOCTURNE Taupe 95



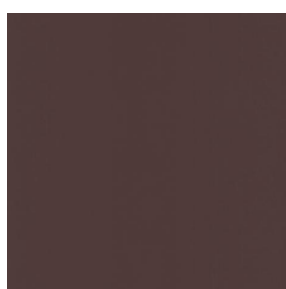
NOCTURNE Noir 10



NOCTURNE anthracite
38



NOCTURNE aubergine
27



NOCTURNE Chamois
111



NOCTURNE Bordeaux
04



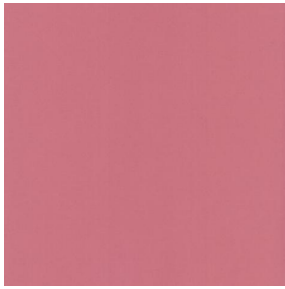
NOCTURNE Rubis 59



(Headquarters) SOTEXPRO - 510 route de Montchal - 42360 PANISSIÈRES - FRANCE - +33 4 77 27 60 60
(Showroom) Le LAB' SOTEXPRO - 4 rue du Mail - 75002 PARIS - FRANCE

Non-contractual photos and colors - Indicative fitting - Fitting may vary depending on support selected

NOCTURNE



NOCTURNE Saumon
143



NOCTURNE Or 94



NOCTURNE Terre 107



NOCTURNE Amande 75



NOCTURNE
Bergamotte 121



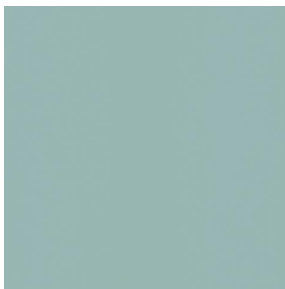
NOCTURNE Tilleul 103



NOCTURNE Prairie 125



NOCTURNE Sapin 126



NOCTURNE Ecume 82



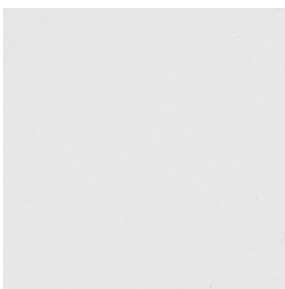
NOCTURNE Beige 63



NOCTURNE Mordoré
133



NOCTURNE Galet 147



NOCTURNE BPI 00



(Headquarters) SOTEXPRO - 510 route de Montchal - 42360 PANISSIÈRES - FRANCE - +33 4 77 27 60 60
(Showroom) Le LAB' SOTEXPRO - 4 rue du Mail - 75002 PARIS - FRANCE

Non-contractual photos and colors - Indicative fitting - Fitting may vary depending on support selected

NOCTURNE absinthe 132

Ce tissu uni est très performant pour l'occultation, il se décline dans une gamme de coloris très variée.

Propriétés techniques



Non feu



Thermique

Applications Store bateau - Parois japonaises - Doublure - Rideaux

Composition 100% polyester avec envers acrylique floqué blanc

Poids 280 g/m² **Laize** 280 cm

Sens Contre sens ou sens normal **Raccord** ↔ cm ↓ cm

Conseils d'entretien     

Minimum commande 1 mètre(s) linéaire(s)

Caractéristiques techniques

Non feu	M1 / BS 5867 TYPE C / B1 / IMO PASS		
Indices optiques	Réflexion lumière :	71 %	
	Absorption lumière :	29 %	
	Transmission lumière :	0 %	
Indices thermiques	réflexion solaire :	66 %	
	absorption solaire :	34 %	
	Transmission solaire :	0 %	
	Transmission UV :	0 %	
	Gtot :	Gt 35 % Fc 60 %	
Résistance	Solidité lumière (unités Class/8)	5	
	Boulochage	3-4	
	Stabilité dimensionnelle (%)	Chaîne	-0,5
		Trame	0
		Martindale (Cycles)	40000
	Allongement rupture (mm)	Chaîne	19
		Trame	22
	Résistance rupture (daN)	Chaîne	37
		Trame	57



(Headquarters) SOTEXPRO - 510 route de Montchal - 42360 PANISSIÈRES - FRANCE - +33 4 77 27 60 60
(Showroom) Le LAB' SOTEXPRO - 4 rue du Mail - 75002 PARIS - FRANCE

Non-contractual photos and colors - Indicative fitting - Fitting may vary depending on support selected